



GARDEN COTTAGE

Thirty Years Living in a Forest Garden

with Graham Bell

1. Why and How We Made a Forest Garden



The Town of Coldstream & River Tweed *looking East*

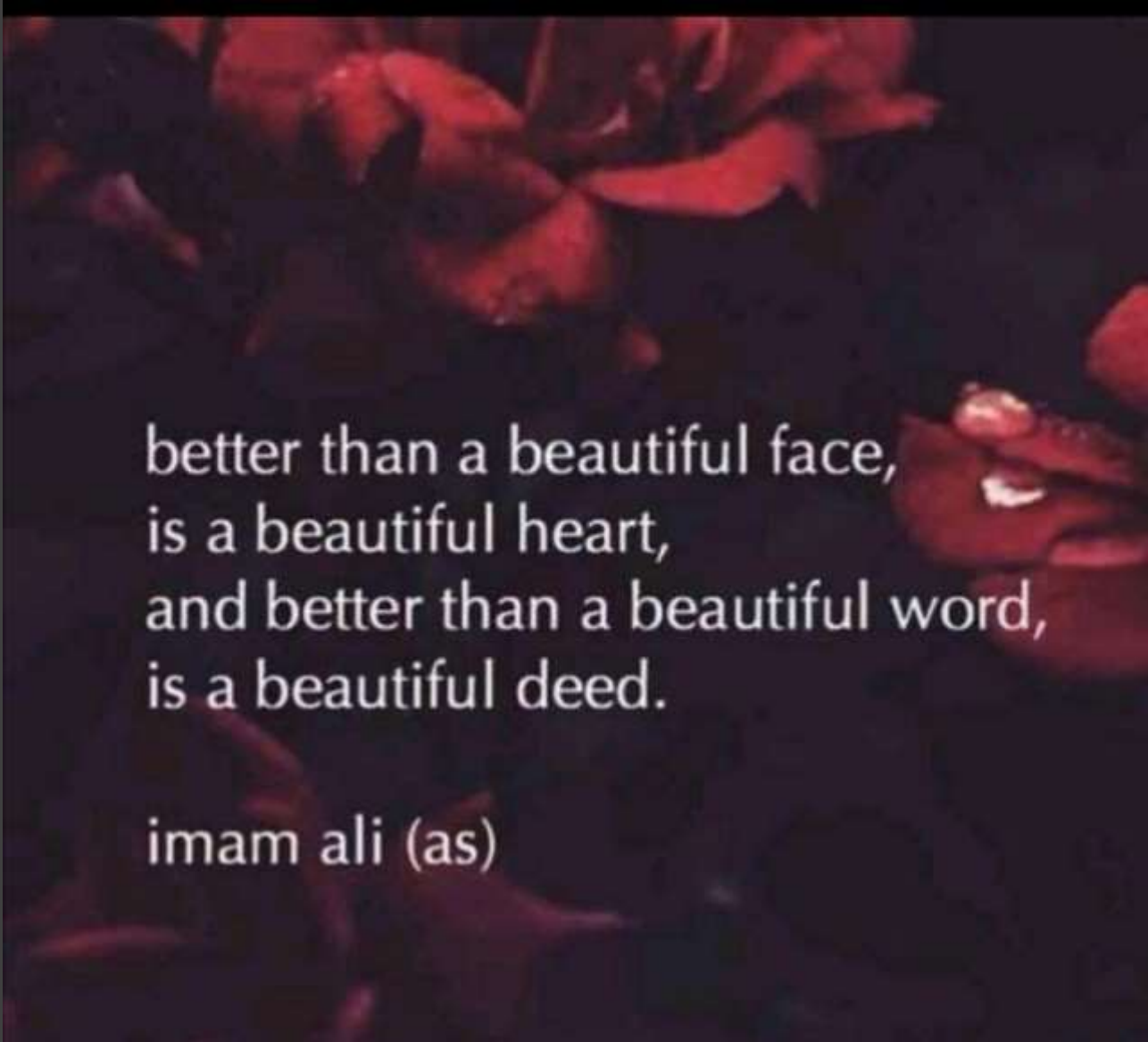


The forest is a peculiar organism of unlimited kindness and benevolence that makes no demands for its sustenance and extends generously the products of its life and activity; it affords protection to all beings . . .

Gautama Buddha



2. HISTORY OF OUR FOREST GARDEN



better than a beautiful face,
is a beautiful heart,
and better than a beautiful word,
is a beautiful deed.

imam ali (as)



1991 LOOKING EAST



1991 LOOKING
WEST



THE TABLE & BENCH WINTER 2011

A photograph of a garden cottage. In the foreground, there is a large green compost bin on the left and various garden plants, including some with white flowers. The cottage is in the background, featuring a dark roof and light-colored walls. The text "GARDEN COTTAGE 1996 (FIVE YEARS ON)" is overlaid on the right side of the image.

GARDEN COTTAGE
1996 (FIVE YEARS
ON)

Garden Cottage March 2020



A photograph of an older man, Robert Hart, in profile, looking towards the right. He has grey hair and is wearing a brown jacket over a checkered shirt. The background is a dense garden with green and yellowing foliage, suggesting autumn. The lighting is soft, with some bright spots from sunlight filtering through the leaves.

FILMING THE GLOBAL GARDENER WITH ROBERT HART
OCTOBER 1990

Oyster Mushrooms *Pleurotus ostreatus* 2020





IT'S ALL ABOUT RELATIONSHIPS

3. THIS IS A FAMILY GARDEN AND WE LIKE SALADS

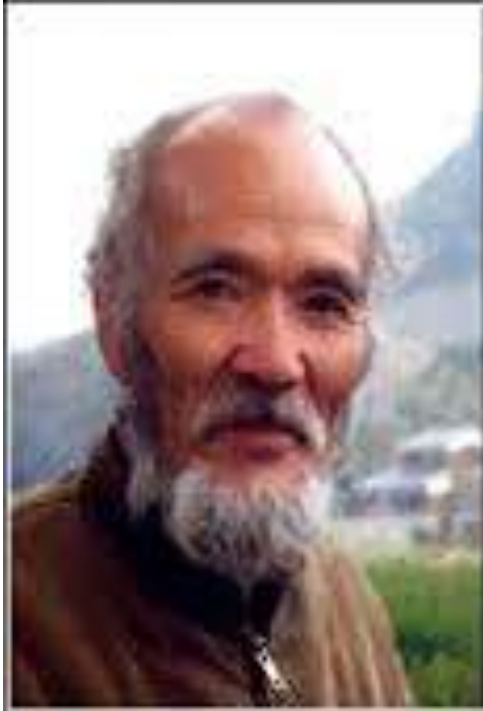




Garden Cottage has always been a family affair. The Forest Garden is our soft living room. Eating together is a key part of how we bond as a family. We are connected too, not just the bees.



FLOWER SALADS HAVE BEEN A HALLMARK DISH FOR
THIRTY YEARS



The healing of the land and the
purification of the human spirit is
the same process.

— *Masanobu Fukuoka* —

AZ QUOTES

4. THE MOST IMPORTANT YIELD OF A FOREST GARDEN



**Grape:
Phoenix 200
Bunches a
year in an
unheated
greenhouse**

OWLS DON'T
GET MUCH
TAMER
THAN THIS-
RESIDENT
TAWNY



Some typical comments from thousands received

◦

Chris:

The Redshed is an exceptional garden, and a delight to re visit when Spring is bursting. Overall a mighty fine day, inspiring to see this mature forest garden, and a delight to once again receive a warm and hospitable welcome from Graham, Nancy and the Red Shed team. The garden holds so many beautiful places and plants round every corner. Thanks again to Graham for imparting a plethora of insights in the life art of permaculture.

Livvy:

Thank you for giving me space peace and inspiration

Helen:

Thank you for sharing your research findings with me and your global perspective, concerns and solutions. It is wonderful seeing your garden and meeting you.

Yield record 2015 (peak yield) top of sheet

[illegible]

Yield record 2015 (peak yield) end of sheet

	Quince Meech's Prolific									0.1	11.0	0.2		11.3
	Quince Vranja										5.5	0.2		5.7
	Ornamental Quince													0.0
	Rowan													0.0
Nuts	Hazel								0.4					0.4
	Walnut										2.0			2.0
														0.0
Total		6.9	2.1	5.2	22.9	42.5	30.4	116.4	107.8	272.2	603.3	5.1	9.1	1223.9
Wild Harvest														
Chanterelles														0.0
Cherry plums														0.0
Dandelion Flowers					0.4	0.5								0.9
Field Mushrooms														0.0
Green Walnuts														0.0
Puff Balls														0.0
Sea Buckthorn Berries														0.0
Total		0.0	0.0	0.0	0.4	0.5	0.0	0.0	0.0	0.0	0.0	0.0	0.0	0.9
Livestock														
Pheasants		2	1	2	5	3	1					1		15
Weight		4	2	4	10	6	2	0	0	0	0	2	0	30.0
											Grand Total			1253.9

Total from 800 m² (0.08 of a hectare) or one fifth of an acre=

- Peak year to date (2015) **1.25 metric tonnes of food**
- Pro rata = 16 tonnes a hectare
- Plus five hundred trees for sale
- Plus 5,000 plants for sale
- .A soft living room
- A teaching space
- Massive amounts of wildlife
- A heap of firewood
- Half our electricity
- Thousands of gallons of rainwater harvested

BIRDS,
INVERTEBRATES
, MAMMALS,
FUNGI, A WHOLE
HOST OF
DIFFERENT
'PEOPLE' SHARE
OUR GARDEN

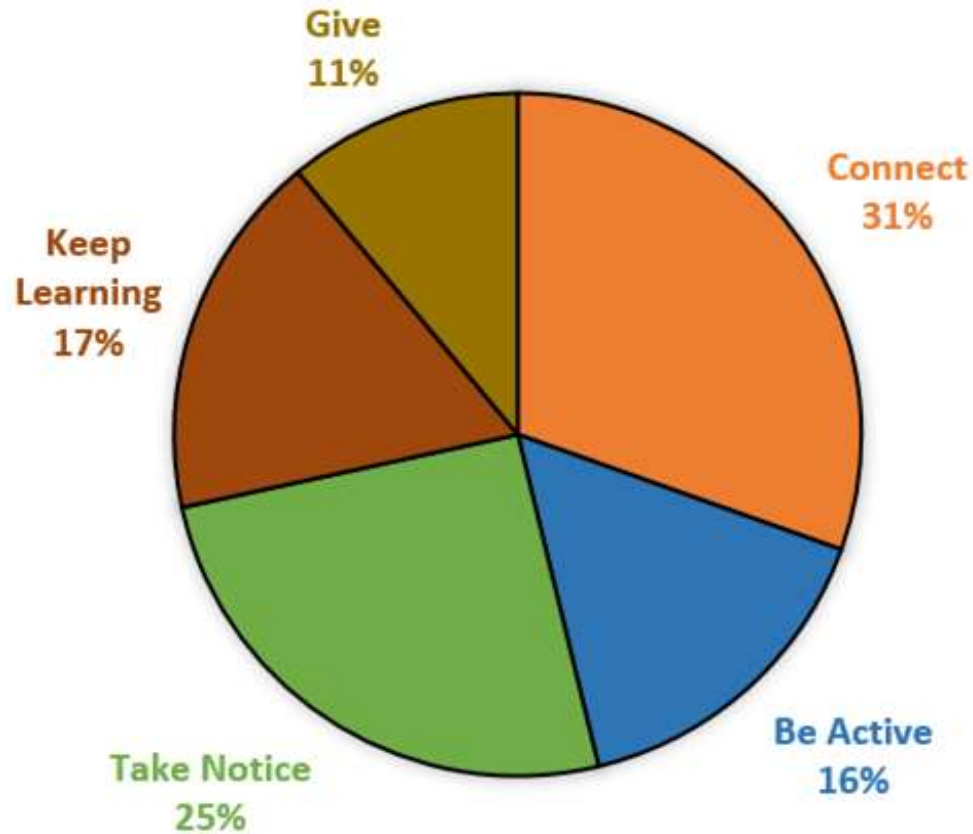


Aphids & Bluetits- Encouraging Life

Welcome resident and beautiful nest



Visitor feedback — New Economics Foundation Criteria



“Incredibly beautiful space.
Such harmony for the wildlife,
and peace for visitors. Thank
you for sharing your knowledge.
We will certainly return soon!”
Visitors’ book, June 2016

Balance of themes mentioned by visitors to the Red Shed and an example of themes in a quote.

Now we measure:

- Food
- Wildlife
- Meeting Like-Minded People
- Learning
- **Sense of place / Spirituality** (Top every time)

5. How Weather and Climate Affect The Forest Garden



The Garden Is Alive Whatever the Weather



JERSEY WALKING STICK – WINTER HARDY KALE





YEAR ROUND
HARVESTS
NEED TO BE
PLANNED

80 punnets (32 kilos) of soft fruit picked by these folks in ten minutes on an open day





**This Rhubarb is
probably the old
variety 'Victoria'**

Bed has been there
fifty years, self seeds
and picks up to
seven months of the
year



Top Fruit includes:

- Apples
- Cherries
- Pears
- Plums
- Damsons
- Gages
- Quinces



6. WHAT IS MY
FAVOURITE
PLANT IN THE
GARDEN?



Gooseberry 'Invicta' 4kg on one standard bush



FRESH
NUTRITIOUS
TASTY FOOD-
CHEMICAL FREE:
FOOD METRES
NOT MILES



7. Challenges of a Forest Garden

"Here's to the crazy ones. The misfits. The rebels. The trouble-makers. The round heads in the square holes. The ones who see things differently. They're not fond of rules, and they have no respect for the status-quo. You can quote them, disagree with them, glorify, or vilify them. But the only thing you can't do is ignore them. Because they change things. They push the human race forward. And while some may see them as the crazy ones, we see genius. Because the people who are crazy enough to think they can change the world, are the ones who do. "

~ Jack Kerouac

Truth Teller



The best WWOOFERS you can get

Life in partnership



PLANTS

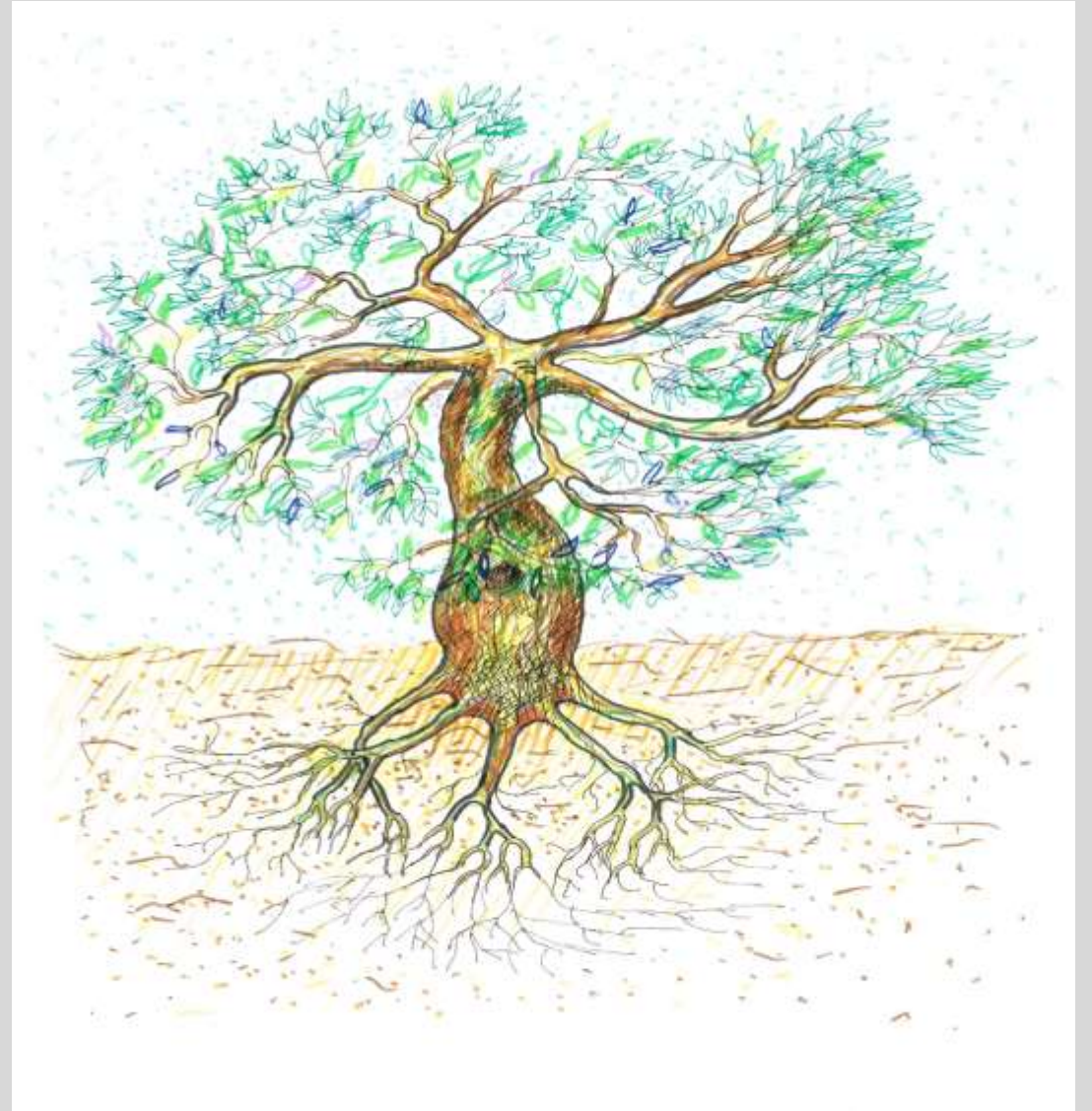


TREES



WILDLIFE

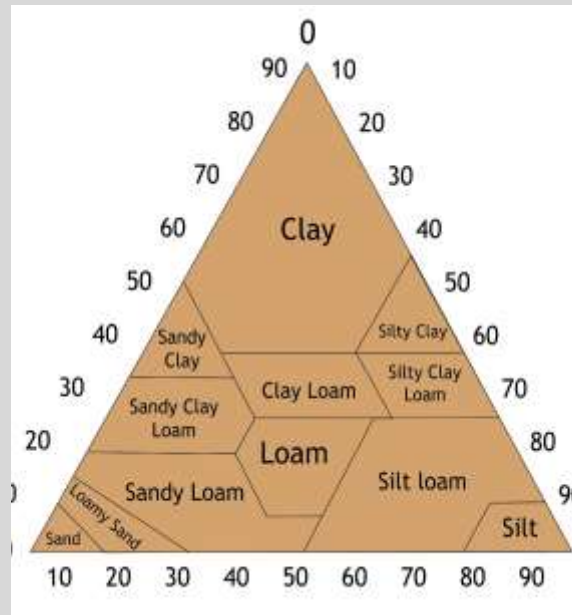
Of course real trees
have roots –
reminding us of the
importance of
making
connections



Life in partnership also needs...



WATER



SOIL



PEOPLE

SAGOLE
BAOBAB
SOUTH AFRICA



ABUNDANT BORDERS



- <http://abundantborders.org.uk/>

“Out of a population of 19 million, 11 million Malawians are ‘subsistence’ farmers, who grow to feed their families but do not produce enough to trade”

pebblemag.com

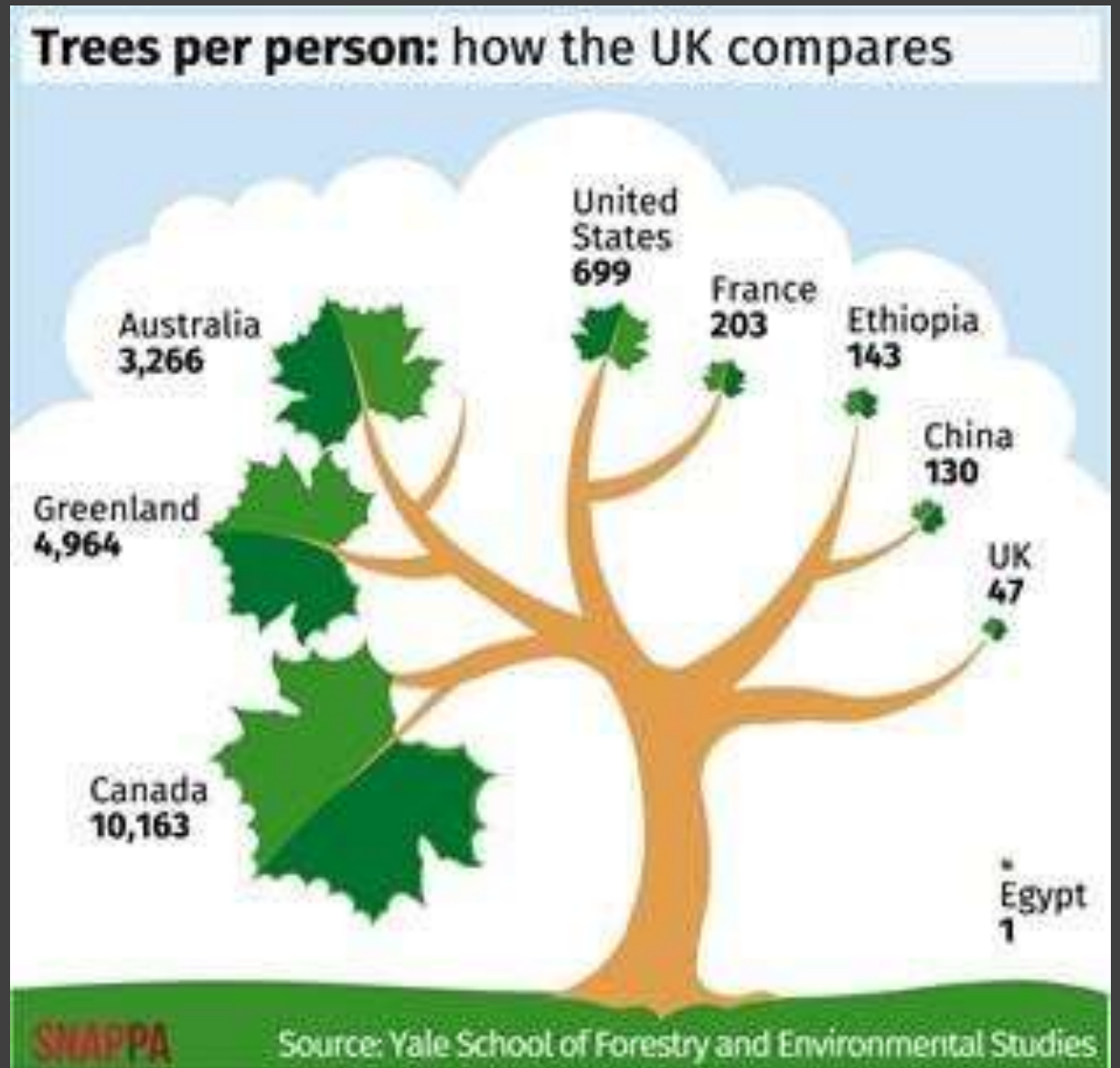




Martha Smith – Beds I Have Known

**As I have gardened,
feeling myself in
some sort of deep
dialogue with an
unseen and silent
partner, I have
come to know true
inner peace.**

8. CONCLUSION: THE FUTURE OF FOREST GARDENING





“A WET DESERT” FRANK FRASER DARLING

Making Wild Garlic Pesto





FOREST
GARDENERS
PLANT HOPE



there
is
no
planet
b

Truth Beckons

“Gardens are not made by singing 'Oh, how beautiful!' and sitting in the shade.” Rudyard Kipling



We are creating awareness, valuing the living earth. Just create the right habitat and the right things will happen.





Thank you for
listening

Graham Bell

<https://www.grahambell.org>

Many people helped
create this presentation.
Together we are strong.